



KUTCHINA[®]
MODULAR KITCHENS
CELEBRATE COOKING

PRESENTING
STATE OF THE ART
CUSTOMIZED
MODULAR KITCHEN

Scrolling through the pages of history, it amazes me how kitchens have evolved from a mere cooking place to a beauty of a home. Kitchen today has become a piece of art that adds to the charm of a home; a place of enjoyment and celebration; a place that defines the finesse and refined choice of the owner. This is why a stark kitchen is now getting moulded into a stylish and state-of-the-art, technologically equipped, eloquently designed Modular kitchen – the centre stage of the home.

Kutchina, one of the leading kitchen solution providers and pioneers of many technological advancements like auto clean chimneys and self timer hobs, brings to you convenient, uniquely designed, elegant and classy Modular Kitchens. Backed with a decade of experience and a dedicated team of creative and highly skilled designers and technicians, Kutchina visualises your Kitchen through your eyes and makes it exactly the way you want it.

We strongly believe that crafting a kitchen is a matter of balancing art and science properly, thus creating a beauty that makes kitchen times special with its elegance, space utilization and functionality.

Flip through the pages of this catalogue to view a fascinating collection of kitchen art, an ensemble of the very best that can go into your kitchen, transforming it into a fantastically designed and elegantly convenient one.

Warm Regards,



Namit Bajoria
(Director, Kutchina)







CONTENTS

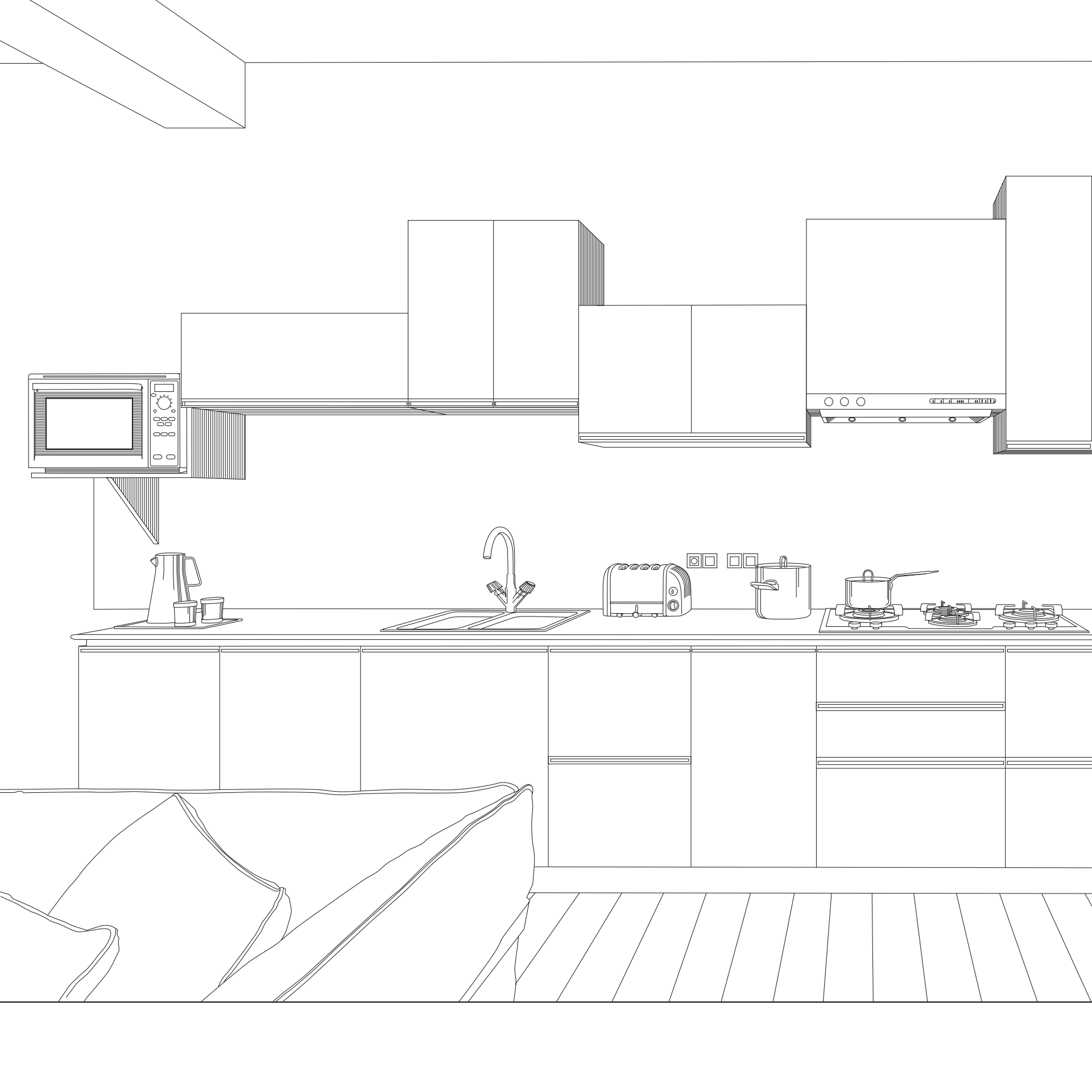
Design And Innovation	02
Why Kutchina Kitchen	04
Vastu for Kitchen	06
About Us	08
Modular Kitchens	09
Noemi	12
Floriana	16
Vittoria	20
Angelisa	24
Francesca	28
Alessandra	32
Chiara	36
Rebecca	40
Martina	44
Isabella	48
Giorgia	52
Serafina	56
Eligiana	60
Accessories	64
Hardware	71
Handles	76
Wood Work	77





DESIGN AND INNOVATION

It has been around for thousands of days and there will always be a way of making it even better: the kitchen. Because one needs to change to keep up with the times. Kutchina always manages to keep its finger on the pulse - with practical innovations and unique design. Always with a focus on functionality Kutchina makes well designed kitchen that reflects the individuality of the people who own them.





WHY KUTCHINA KITCHEN

We offer customised kitchen, and we try to bring in latest designs, latest accessories and appliances. We keep updating our designs as per latest global innovations to increase comfort, functionality and style statement.

How are accessories important? They help to store and access kitchen items properly, thus reducing the wastage of time and increasing ease of operation.

German Technology : Manufactured in India with the help of machines and certain raw material from Germany.

Extensive design options : Available in various colours, textures and designs to make kitchens a thing of beauty.

Affordable price range : Kitchens that look heavenly, but at down-to-earth prices.

Optimum space utilization : Making the best of the available dimensions to give you the best kitchen.

Fastest delivery time : So that you don't have to wait for long to make your kitchen a matter of pride.





VASTU FOR KITCHEN

Vastu Shastra dictates that the kitchen should be in the south-east part of the home as the lord of 'Agni' (Fire) prevails in south-east direction. The second best option for harmony at home is a north-west location. The stove should be placed in the south-east part of the kitchen for the cook to face east while cooking.

East quadrant is considered an auspicious location for kitchen. In diagonal plots, the north quadrant location can pose threats on female members. West quadrant gives average results for kitchen, provided the kitchen is not over or under the prayer room, bathroom or bedroom.





ABOUT US

After a decade of delivering quality, innovation and a wide range of appliances in the Indian market, Kutchina has become one of the leading Kitchen Appliances brands in India today. After establishing its dominance in the Eastern India market, Kutchina has now set its eyes to conquer the rest of the country as well. Expanding options further, Kutchina has now forayed into the Kitchen Interiors and launched modular kitchens with state-of-the-art design and functionality.

Our products have carved a niche in one of the toughest market segments – Modular Kitchen. Today, with 30 galleries, our distribution network covers the entire state of West Bengal, Bihar, Jharkhand and North East. Due credit is owed to all our distributors and dealers for creating Kutchina's amazing brand recall.

In this era of globalization, to keep pace with the fast changing customer trends and requirements, we invest in a continuous R&D system. We've constantly raised our bar in the quality of products as well as infrastructure to provide most technologically advanced products that pre-empt the market demands. Our aim is to deliver complete satisfaction to our customers with excellent product quality and first-rate after sales service.

Numerous accolades won by Brand Kutchina bear testimonial to the company's reputation it has built in the industry in these years. This is further substantiated with a large, satisfied customer base and a loyal employee strength.

MODULAR
KITCHENS

The page features a large orange trapezoidal shape on the left side, which tapers towards the top right. A smaller blue triangle is positioned at the top right corner, partially overlapping the orange shape. The text is centered within the orange area.

REDISCOVER
THE JOY OF
COOKING
WITH KUTCHINA



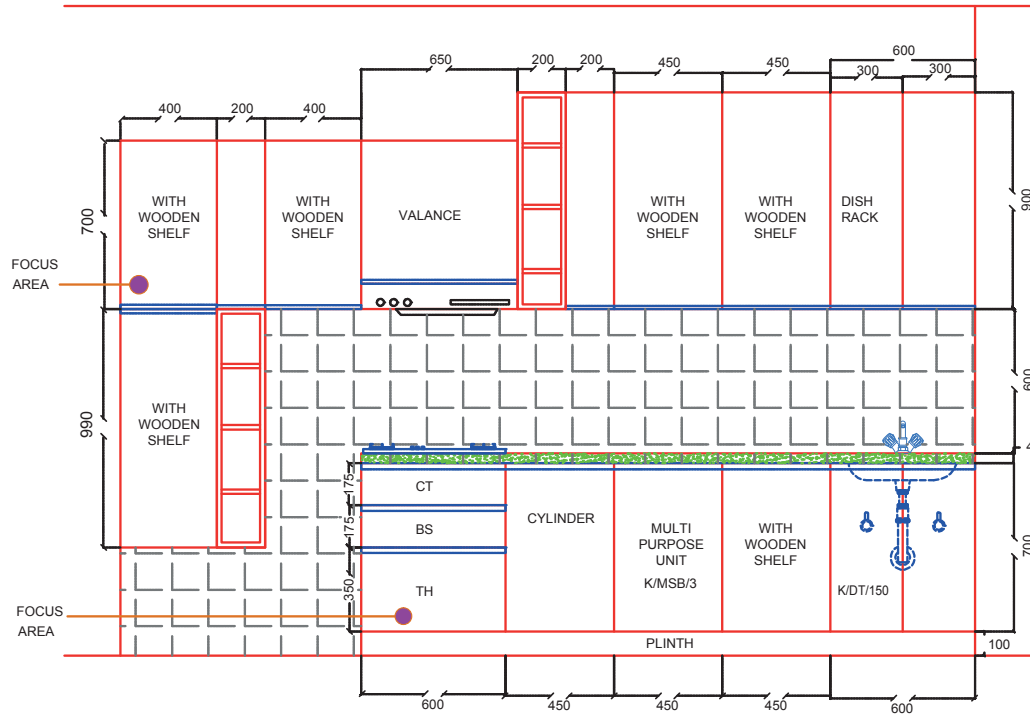


NOEMI

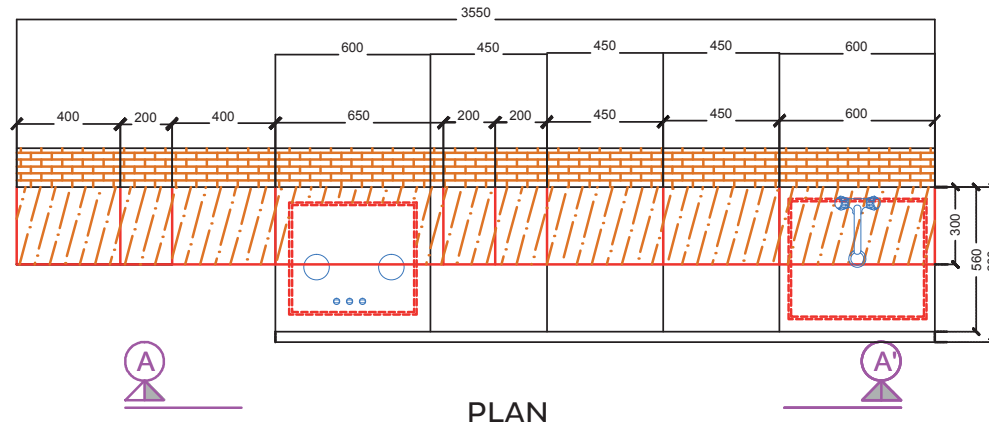
'KEEP IT SIMPLE' - This Kitchen provides professional efficiency, a homely atmosphere and a highly personal interpretation of space. It expresses metropolitan style in an exclusive way. The open wooden blocks coupled with the combination of solid colour and hard-wood grain laminate finish breaks the monotony. The up & down over-head cabinets and the stainless steel panel in Counter Dado Area add to the grace of the kitchen.

NOEMI

FLOOR PLAN



ELEVATION DETAILING A A'



PLAN

KEY FOCUS AREA



SPECIFICATION

IT IS USED FOR SOFT SOUNDLESS CLOSING OF THE SHUTTERS.

COLOURS AVAILABLE IN



TECHNICAL SPECIFICATION AND MATERIALS USED IN THIS KITCHEN

- | | | |
|-------------------------|---|---------------------------------------|
| 1. FINISHING MATERIALS | : | IT IS LAMINATED (DELUX) KITCHEN |
| 2. STRUCTURAL MATERIALS | : | 16 MM BOILING WATER RESISTANT PLYWOOD |
| 3. HANDLE | : | PROFILE HANDLE |
| 4. ACCESSORIES | : | THALI BASKET |
| 5. HARDWARE | : | 0 DEGREE KUTCHINA HINGE |
| 6. SIZE OF THE KITCHEN | : | APPROX 3000 mm X 1350 mm |



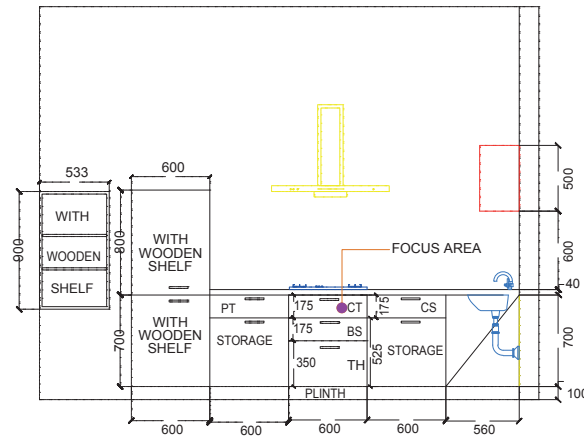


FLORIANA

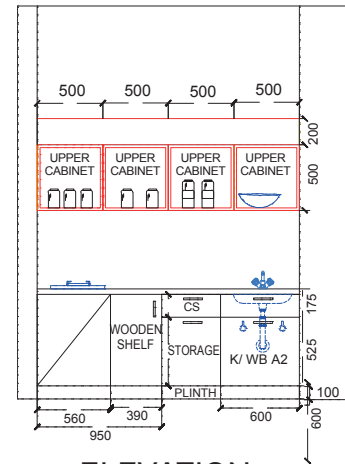
'ORANGE IS THE HAPPIEST COLOUR' - With an effective use Of contrasting colours and design adapted to your lifestyle and cooking, Floriana is a subject of admiration. Graced with niche type box cabinet, back straight dado panelling and inset colour laminate, this beauty not only earns your kitchen compliments, but also earns envious gazes.

FLORIANA

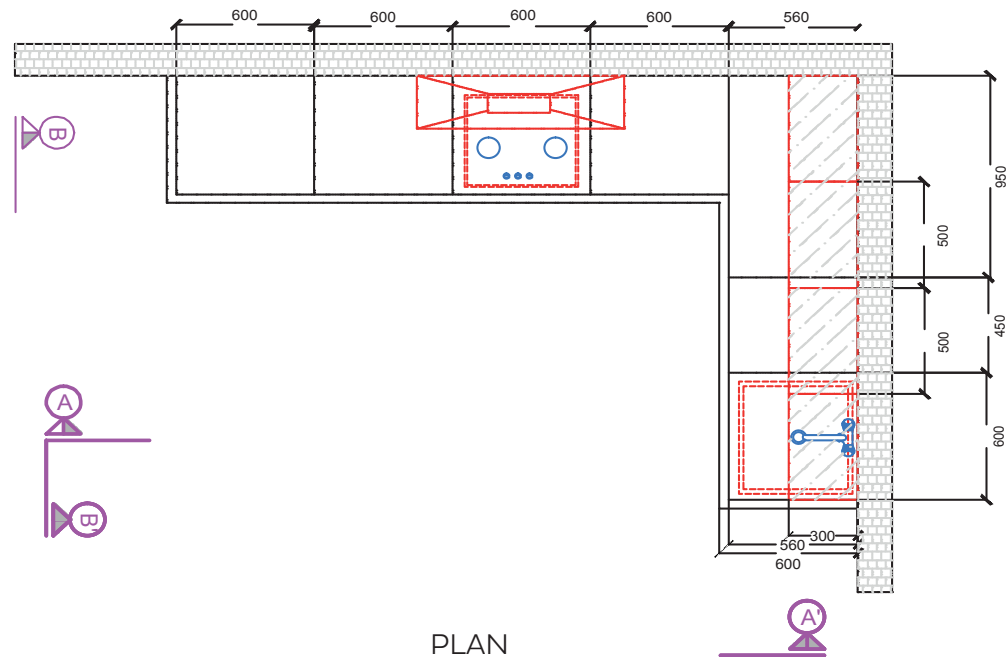
FLOOR PLAN



ELEVATION DETAILING A A'



ELEVATION DETAILING B B'



PLAN

KEY FOCUS AREA



SPECIFICATION

IT IS A PERFORATED CUTLERY TRAY MADE FOR ECONOMIC KITCHEN AND CORPORATE KITCHENS.

COLOURS AVAILABLE IN



TECHNICAL SPECIFICATION AND MATERIALS USED IN THIS KITCHEN

- | | |
|-------------------------|---|
| 1. FINISHING MATERIALS | : IT IS PU PAINT (DELUX) KITCHEN |
| 2. STRUCTURAL MATERIALS | : 16 MM BOILING WATER RESISTANT PLYWOOD IS USED |
| 3. HANDLE | : CH 828 |
| 4. ACCESSORIES | : STAINLESS STEEL CUTLERY TRAY |
| 5. HARDWARE | : 0 DEGREE KUTCHINA HINGE |



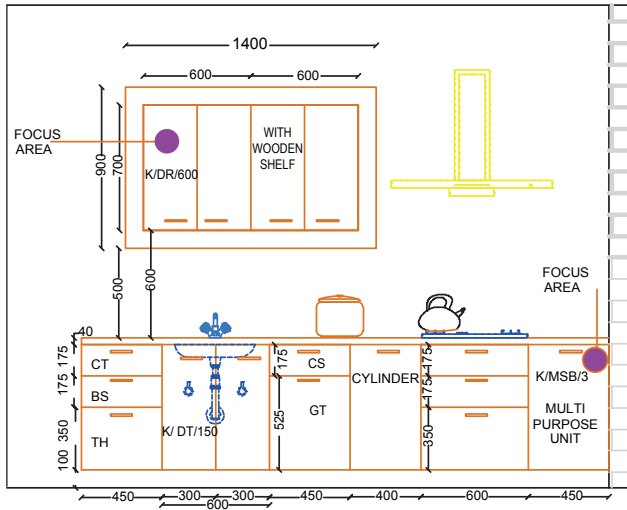


VITTORIA

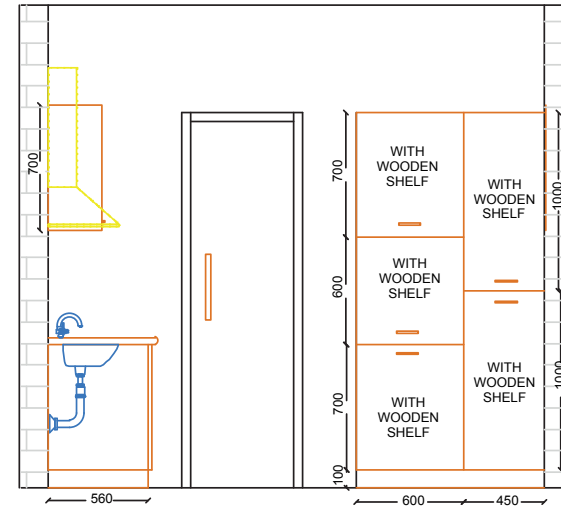
'CREATIVE EXPRESSION' - Vittoria is focused on simple, yet exciting use of space, colour and texture, with an unmistakable sense of urban energy and artistic creativity. The high-rise wood finish dado panel and wooden grain laminate with solid flat beige colour combination make your kitchen alluring.

VITTORIA

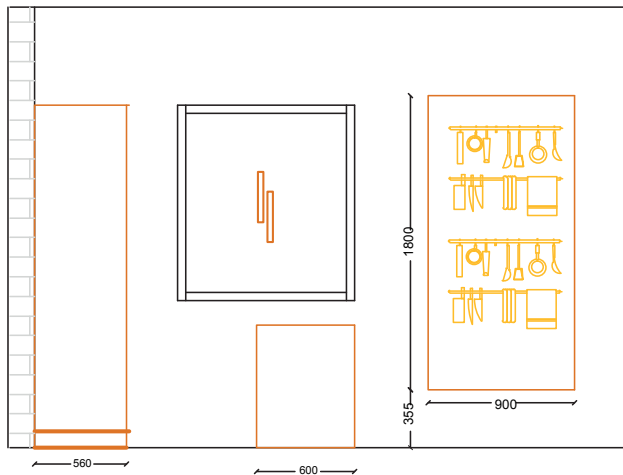
FLOOR PLAN



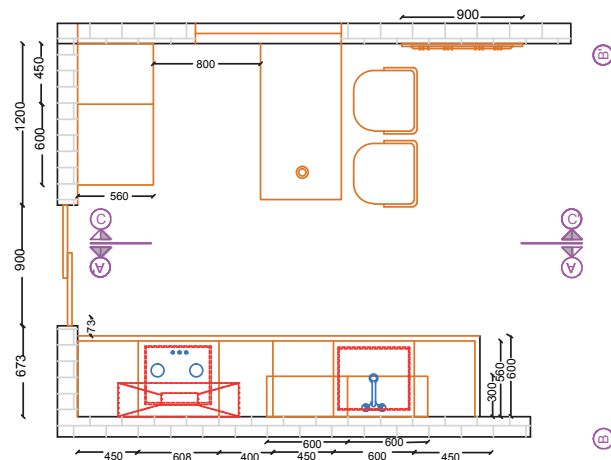
ELEVATION DETAILING A'



ELEVATION DETAILING B'



ELEVATION DETAILING C'



PLAN

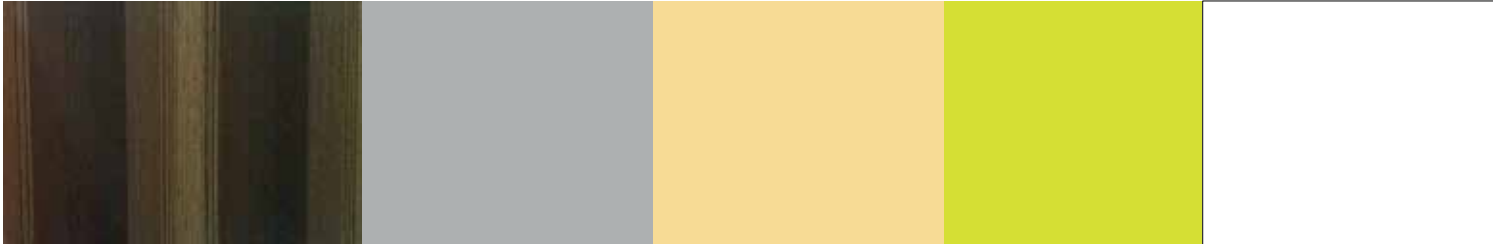
KEY FOCUS AREA



SPECIFICATION

DISH RACK FOR OVERHEAD CABINETS, USED FOR REGULAR CUTLERIES.

COLOURS AVAILABLE IN



TECHNICAL SPECIFICATION AND MATERIALS USED IN THIS KITCHEN

1. FINISHING MATERIALS : IT IS LAMINATED (DELUX) KITCHEN
2. STRUCTURAL MATERIALS : 16 MM BOILING WATER RESISTANT PLYWOOD
3. HANDLE : 8" ECONOMY HANDLE
4. ACCESSORIES : DISH RACK - 600 AND MULTI PURPOSE BASKET
5. HARDWARE : SILVER PLINTH



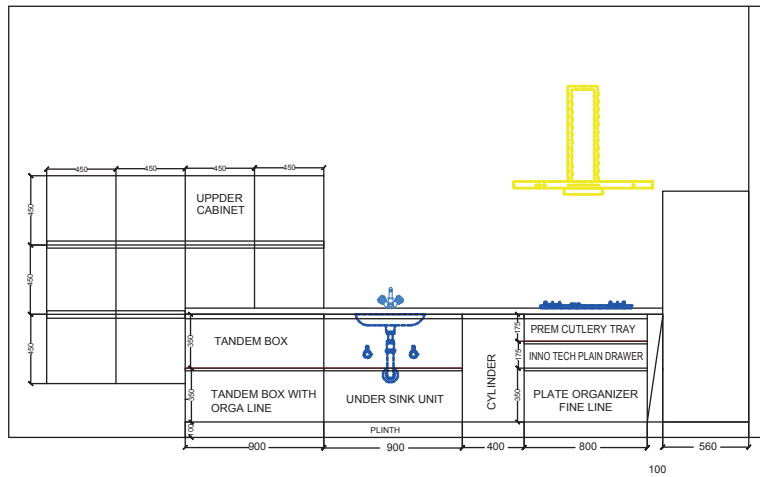


ANGELISA

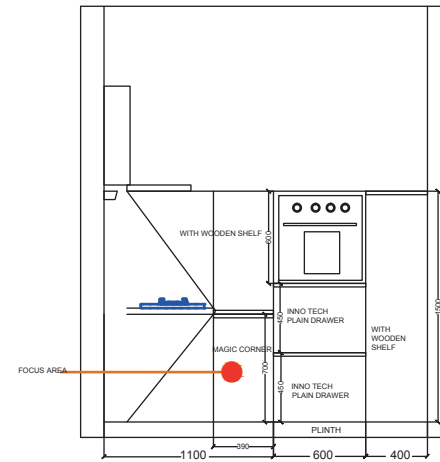
'ULTIMATE SOPHISTICATION' - A design perfected with a splash of pattern, granting a personal character to the kitchen. Angelisa comes with a mesmerising red and white colour combination. The multifunctional wall mounted cabinet not only makes cooking convenient but also adds to your pride.

ANGELISA

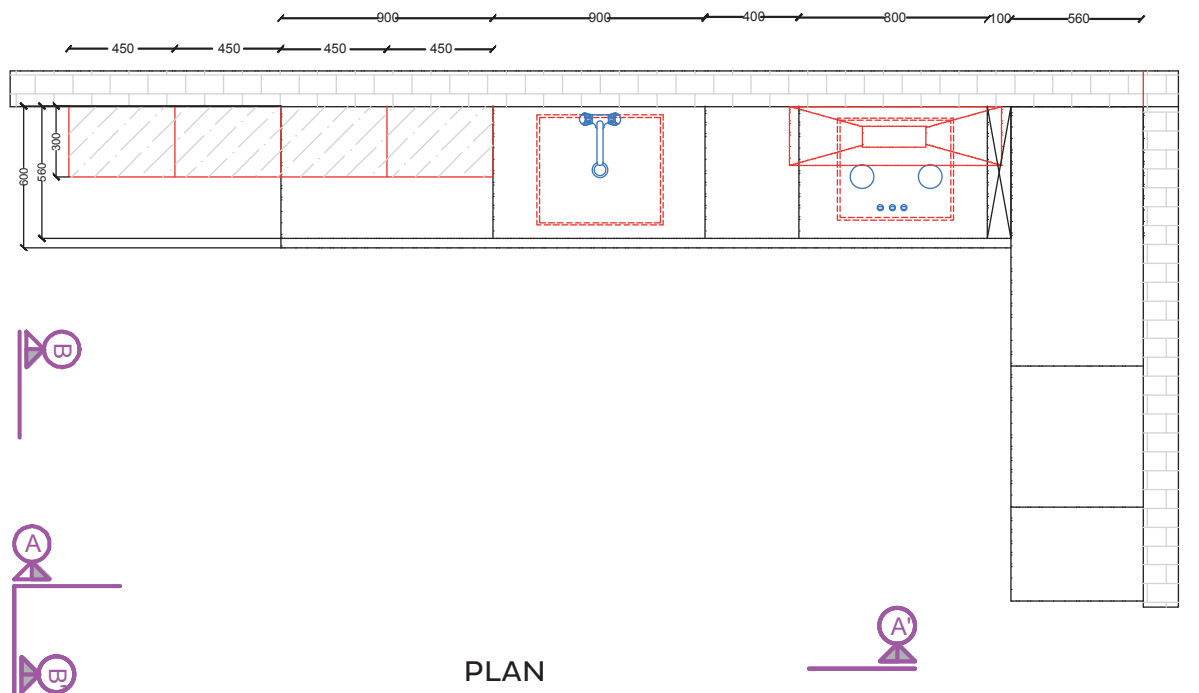
FLOOR PLAN



ELEVATION DETAILING A'



ELEVATION DETAILING B'



PLAN

KEY FOCUS AREA



SPECIFICATION

IT IS THE MOST OPTIMIZED VERSION AMONG THE CLASSIC CORNER CABINETS. DUE TO ITS USER FRIENDLY MOVEMENT, THE WARI CORNER IS EASILY ACCESSIBLE WHEN OPENED.

COLOURS AVAILABLE IN



TECHNICAL SPECIFICATION AND MATERIALS USED IN THIS KITCHEN

- | | | |
|-------------------------|---|---|
| 1. FINISHING MATERIALS | : | IT IS LAMINATED (DELUX) KITCHEN |
| 2. STRUCTURAL MATERIALS | : | 16 MM BOILING WATER RESISTANT PLYWOOD |
| 3. HANDLE | : | MAINLY USED PUSH TO OPEN INSTEAD OF SPECIFIC HANDLE |
| 4. ACCESSORIES | : | MAGIC CORNER (BLUM) |



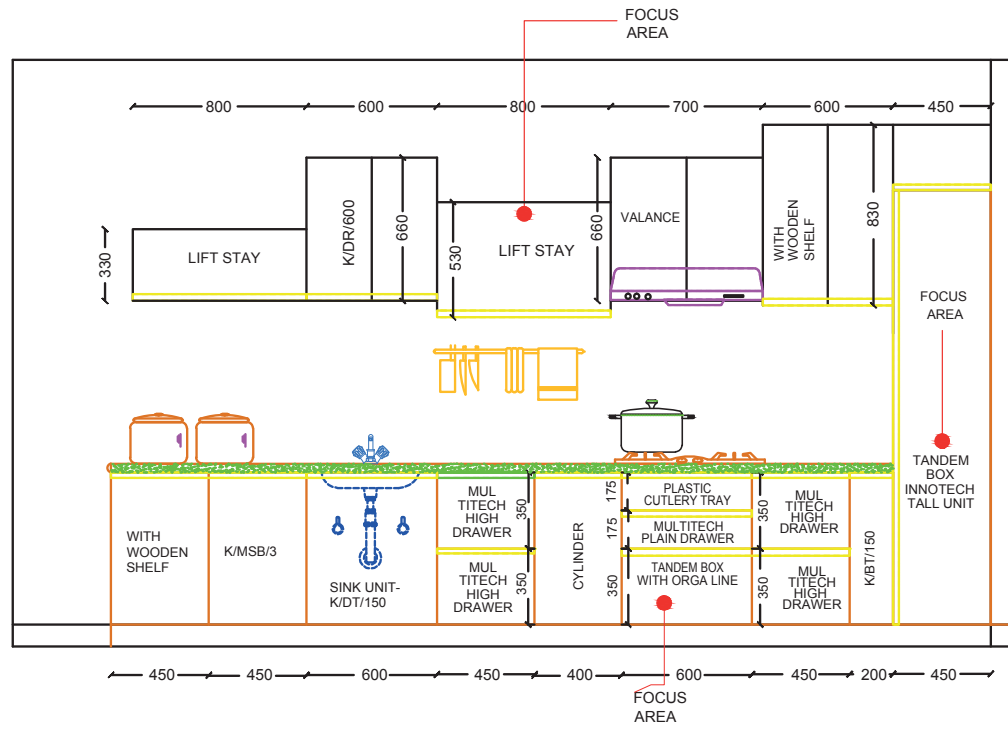


FRANCESCA

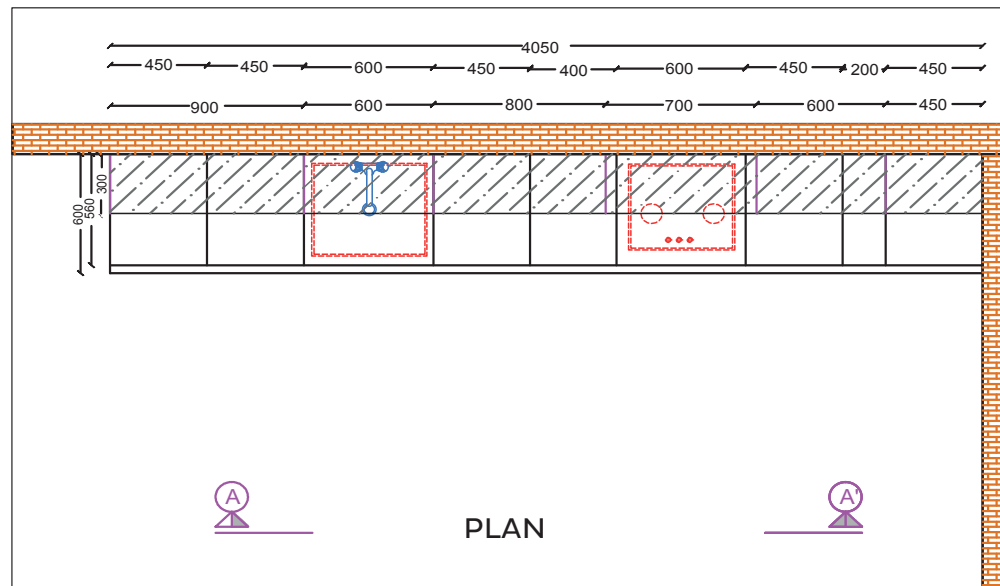
'STYLE IS FOREVER' - This richly inviting style is all about the freedom to pursue a more exciting lifestyle without leaving home. With up and down overhead cabinet and contrasting colours, the darker dado, the rectangular shaped overhead cabinet and bright colours - Francesca makes cooking fun.

FRANCESCA

FLOOR PLAN



ELEVATION DETAILING A A'



PLAN

KEY FOCUS AREA



SPECIFICATION

THIS IS AN IDEAL SOLUTION FOR HIGH AND MID WALL UNITS. THE STAY PROFILE HYDROLIC LIFT SYTEM OPENS EASILY. REMAINS IN ANY DESIRED POSITIONS AND CLOSES SILENTLY AND EFFORTLESSLY.

COLOURS AVAILABLE IN:



TECHNICAL SPECIFICATION AND MATERIALS USED IN THIS KITCHEN

- | | | |
|-------------------------|---|---|
| 1. FINISHING MATERIALS | : | IT IS POLY URETHANE HIGH GLOSS KITCHEN |
| 2. STRUCTURAL MATERIALS | : | 16 MM BOILING WATER RESISTANT PLYWOOD |
| 3. HANDLE | : | PROFILE HANDLE |
| 4. ACCESSORIES | : | TANDEM BOX ORGA LINE,TANDEM BOX TALL UNIT |
| 5. HARDWARE | : | SINGLE LIFT STAY (KUTCHINA) |



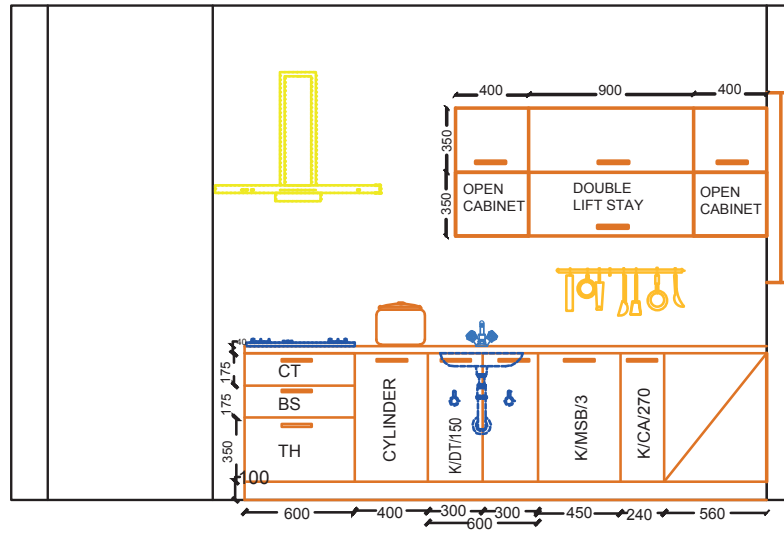


ALESSANDRA

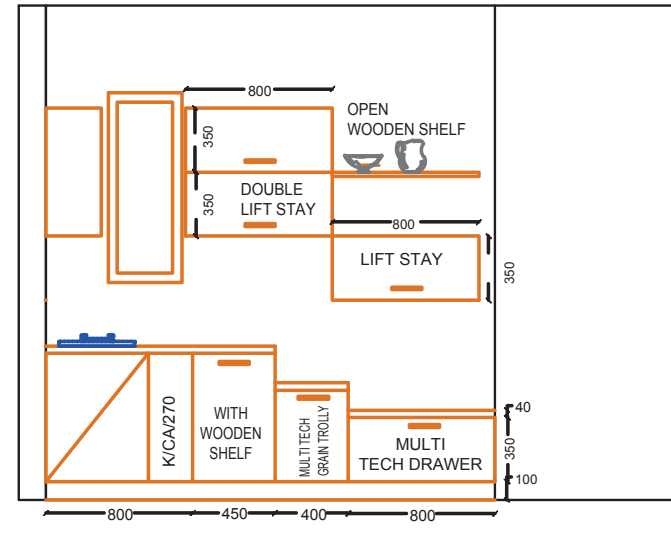
'FAR AWAY FROM SIMPLE' - When the contemporary won't do, wow it with this modern kitchen! The soul of the kitchen is found in the linear characteristics. The kitchen cabinet with decorative lamination and base cabinet with steppes compliments the overhead cabinet stunningly.

ALESSANDRA

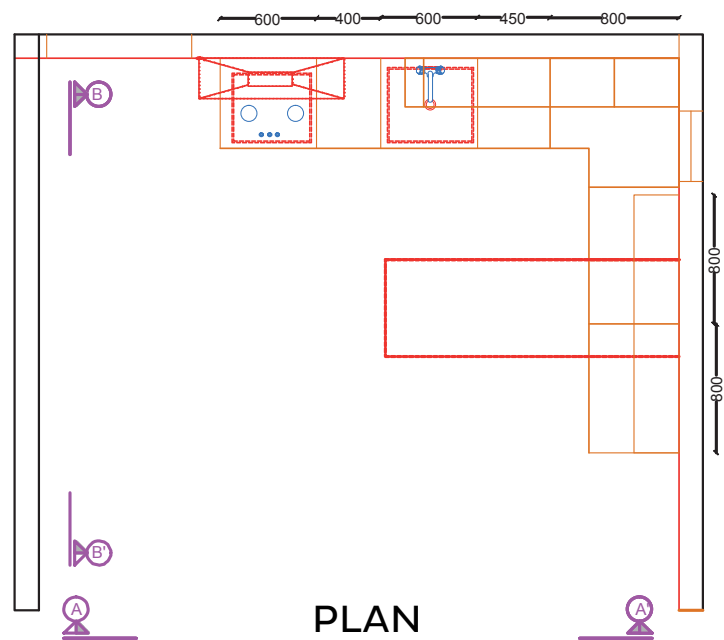
FLOOR PLAN



ELEVATION DETAILING A'



ELEVATION DETAILING B'



PLAN

KEY FOCUS AREA



SPECIFICATION

ACCESSORY WHICH UTILISES THE CORNER OF THE KITCHEN WHERE YOU CAN KEEP ANY UTENSILS FOR KITCHEN USE.

COLOURS AVAILABLE IN



TECHNICAL SPECIFICATION AND MATERIALS USED IN THIS KITCHEN

1. FINISHING MATERIALS : IT IS LAMINATED (DELUX) KITCHEN
2. STRUCTURAL MATERIALS : 16 MM BOILING WATER RESISTANT PLYWOOD
3. HANDLE : 6" PREMIUM
4. ACCESSORIES : CA 270 USED FOR CORNER
5. HARDWARE : SINGLE LIFT STAY (KUTCHINA)



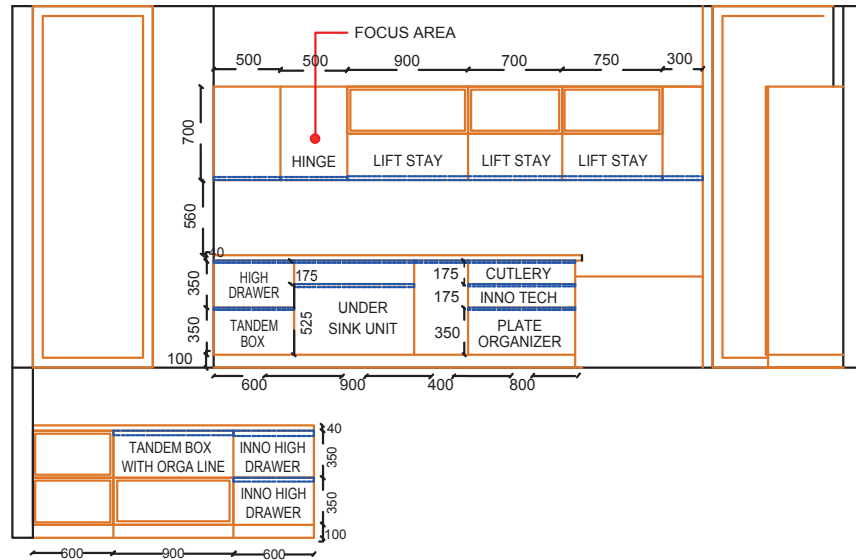


CHIARA

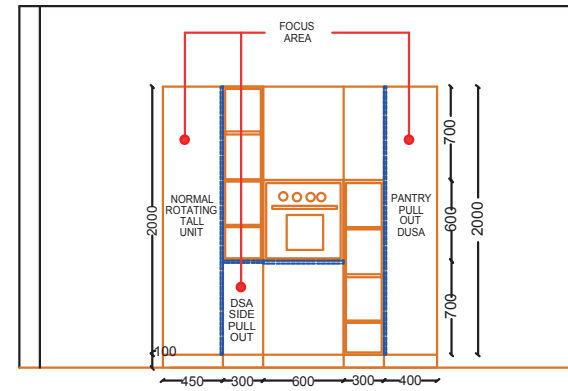
'A SOOTHING ACCENT' - Architecture meets kitchen culture with cantilevered shelves and curvilinear handles. The soothing pastel colour combining with minimal use of lamination in the open boxes not only steals the show but also inspires the chef in you!

CHIARA

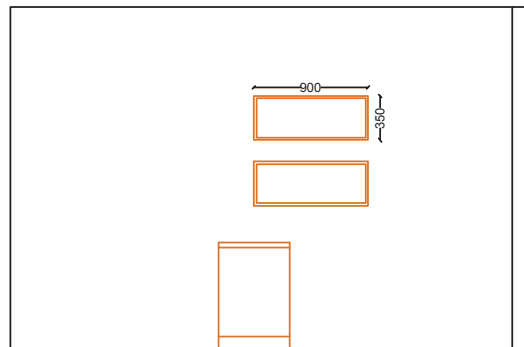
FLOOR PLAN



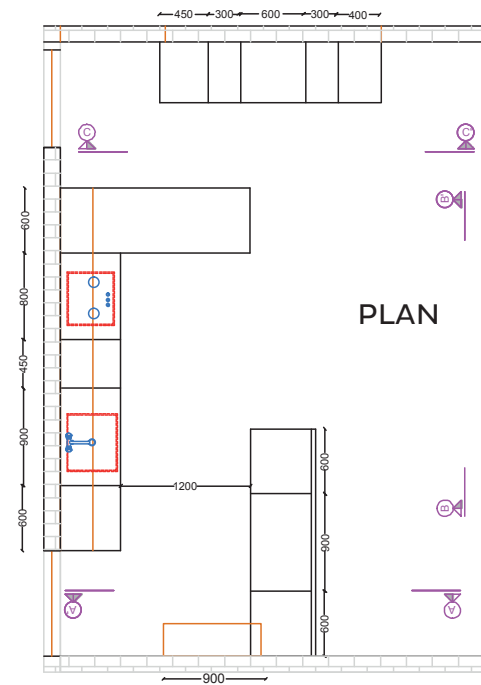
ELEVATION DETAILING BB'



ELEVATION DETAILING CC'



ELEVATION DETAILING A A'



KEY FOCUS AREA



SPECIFICATION

BLUMOTION HINGE HAS SILENT AND EFFORTLESS CLOSING ACTION.

COLOURS AVAILABLE IN



TECHNICAL SPECIFICATION AND MATERIALS USED IN THIS KITCHEN

- | | | |
|-------------------------|---|---|
| 1. FINISHING MATERIALS | : | POLY URETHANE HIGH GLOSS KITCHEN |
| 2. STRUCTURAL MATERIALS | : | 16 MM BOILING WATER RESISTANT PLYWOOD |
| 3. HANDLE | : | PROFILE HANDLE |
| 4. ACCESSORIES | : | TALL UNIT-DUSA PANTRY PULL OUT, NORMAL ROTATING, DUSA SIDE PULL OUT (BLUM), |
| 5. HARDWARE | : | 0 DEGREE KUTCHINA HINGE |



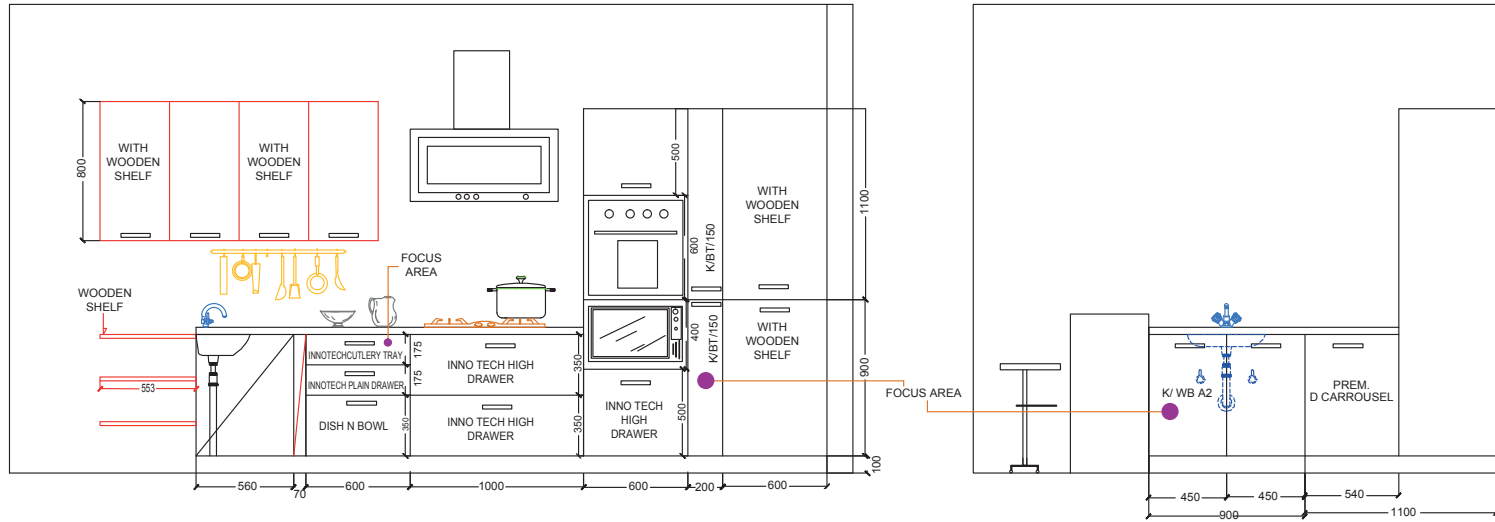


REBECCA

‘BEING DIFFERENT’ - A design perfected with a splash of pattern, granting a personal character to the kitchen. If you desire purity of lines, then this kitchen is designed specially for you. The dark coloured dado panelling adds elegance to your kitchen and the placement of the breakfast table makes the kitchen unique and mesmerizing.

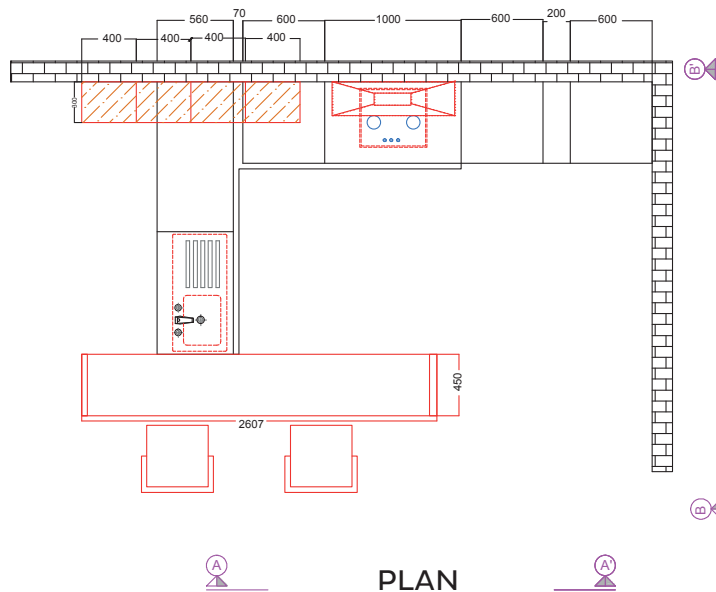
REBECCA

FLOOR PLAN



ELEVATION DETAILING A'

ELEVATION DETAILING B'



PLAN

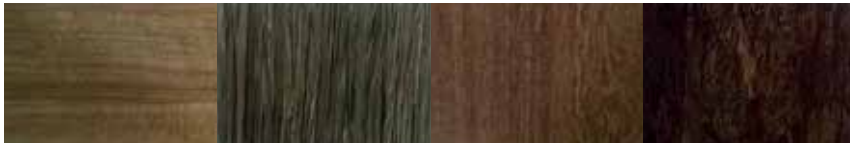
KEY FOCUS AREA



SPECIFICATION

IT'S A BOTTLE PULL OUT. SPACE SAVING AND UTILITIES FOR KEEPING MORE BOTTLES SPICES IN ONE SPACE.

COLOURS AVAILABLE IN



TECHNICAL SPECIFICATION AND MATERIALS USED IN THIS KITCHEN

1. FINISHING MATERIALS : IT IS LAMINATED (PREMIUM) KITCHEN
2. STRUCTURAL MATERIALS : 16 MM BOILING WATER RESISTANT PLYWOOD
3. HANDLE : PROFILE HANDLE
4. ACCESSORIES : INNOTECH DRAWER (KUTCHINA), BOTTLE PULL OUT, WB A2 -WASTE BIN (KUTCHINA)
5. HARDWARE : INTER MATE HINGE (KUTCHINA)



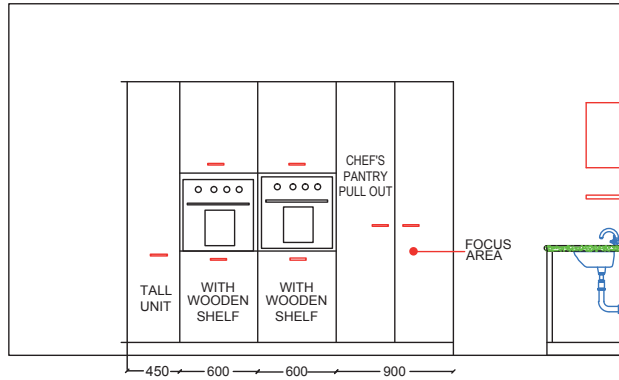


MARTINA

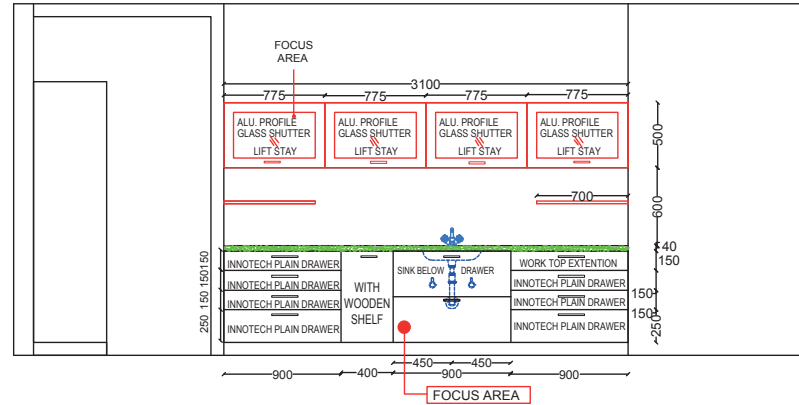
'YOUR SACRED SPACE' - Martina is an interesting concept that adds workspace in the kitchen and can also be used as a dining area. In keeping with the open plan living, here we provide a central island for a more social experience. The pastel colour brings every surface to life being a perfect compliment to the glass units and granite worktops that ensure great visibility.

MARTINA

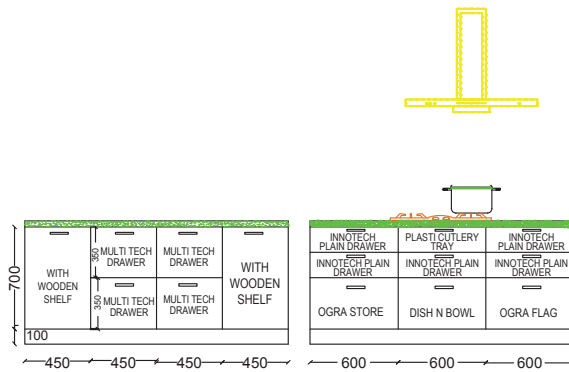
FLOOR PLAN



ELEVATION DETAILING BB'

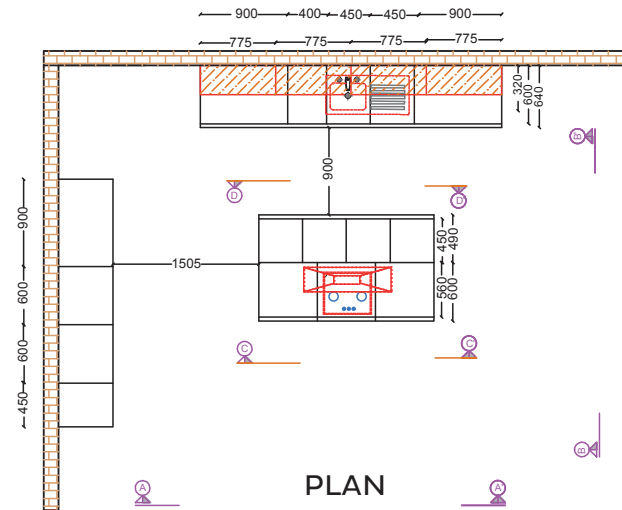


ELEVATION DETAILING AA'



ELEVATION DETAILING CC'

ELEVATION DETAILING DD'



PLAN

KEY FOCUS AREA



SPECIFICATION

ALUMINIUM PROFILE SHUTTER IS EASY TO CLEAN AND MAINTAIN. THESE SHUTTERS HAVE A THIN BORDER OF ALUMINIUM ON OUTSIDE. THE SHUTTERS ARE ATTACHED TO THE CABINETS WITH AUTO HINGES THAT ENSURE EASY AND SOFT CLOSING OF THE SHUTTERS.

COLOURS AVAILABLE IN



TECHNICAL SPECIFICATION AND MATERIALS USED IN THIS KITCHEN

1. FINISHING MATERIALS : POLY URETHANE HIGH GLOSS KITCHEN
2. STRUCTURAL MATERIALS : 16 MM BOILING WATER RESISTANT PLYWOOD
3. HANDLE : 8" PREMIUM HANDLE
4. ACCESSORIES : CHEF'S PANTRY PULL OUT ,UNDER SINK DRAWER, WORK TOP EXTENTION (BLUM)
5. HARDWARE : SINGLE LIFT STAY (BLUM)
6. SHUTTER : ALU PROFILE COLORED GLASS SHUTTER



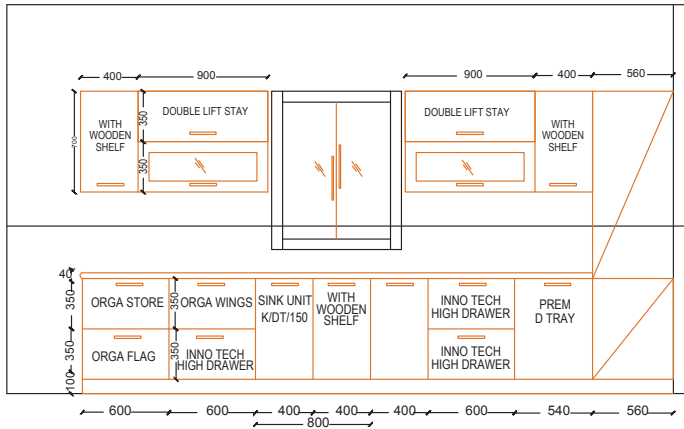


ISABELLA

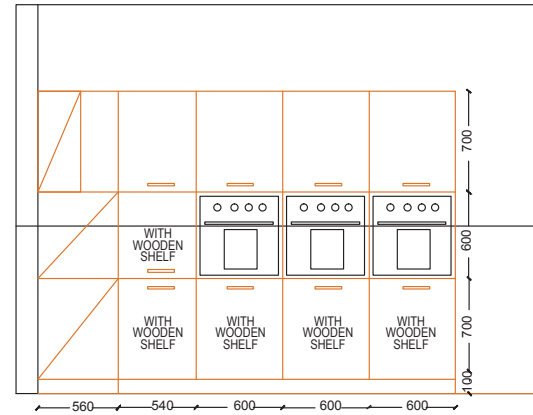
'MY HAPPY PLACE' - Here, form follows feelings! Restyling classical to create a contemporary kitchen with a warm appeal, adding a unique touch by combining contemporary and modern styles. The ergonomic spacing between drawers, gives your kitchen a whole new look and makes it look neat.

ISABELLA

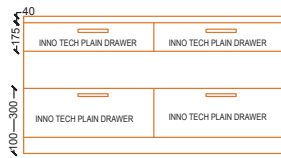
FLOOR PLAN



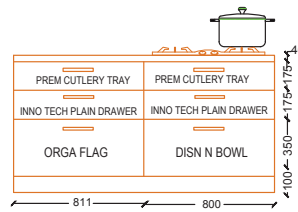
ELEVATION DETAILING B B'



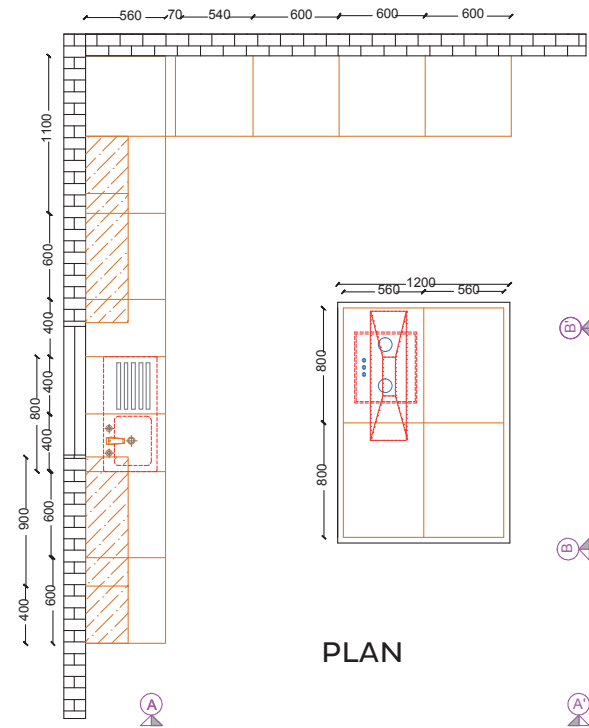
ELEVATION DETAILING A A'



ELEVATION DETAILING B B'



ELEVATION DETAILING A A'



PLAN

KEY FOCUS AREA



SPECIFICATION

BLUM MAKES STORING OF PLATES AND CROCKERY IN A FULL EXTENSION DRAWER. NOW EASY WITH ITS ORGA LINE SOLUTION.

COLOURS AVAILABLE IN



TECHNICAL SPECIFICATION AND MATERIALS USED IN THIS KITCHEN

- | | | |
|-------------------------|---|---|
| 1. FINISHING MATERIALS | : | IT IS LAMINATED (PREMIUM) KITCHEN |
| 2. STRUCTURAL MATERIALS | : | 16 MM BOILING WATER RESISTANT PLYWOOD |
| 3. HANDLE | : | CH 282 |
| 4. ACCESSORIES | : | UNDER SINK DETERGENT PULL OUT, WORK TOP WASTE BIN, WICKER BASKET (BLUM) |
| 5. HARDWARE | : | 0 DEGREE SENSY HINGE AND BLIND CORNER HINGE |



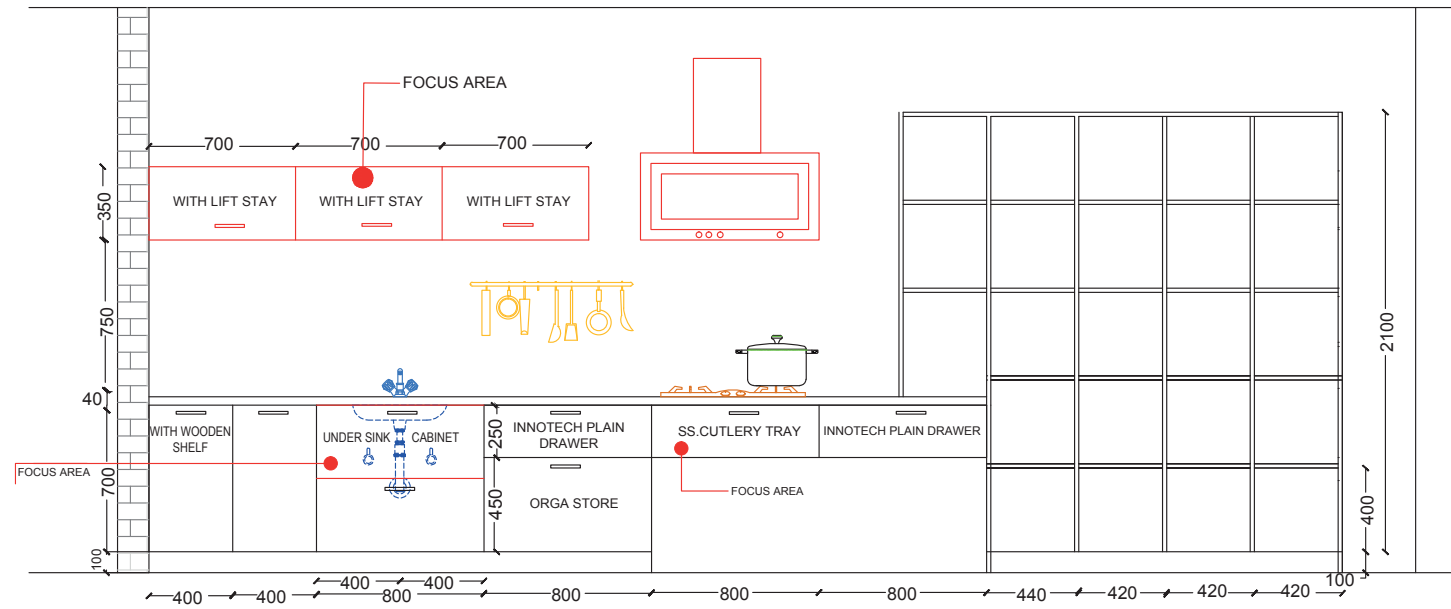


GIORGIA

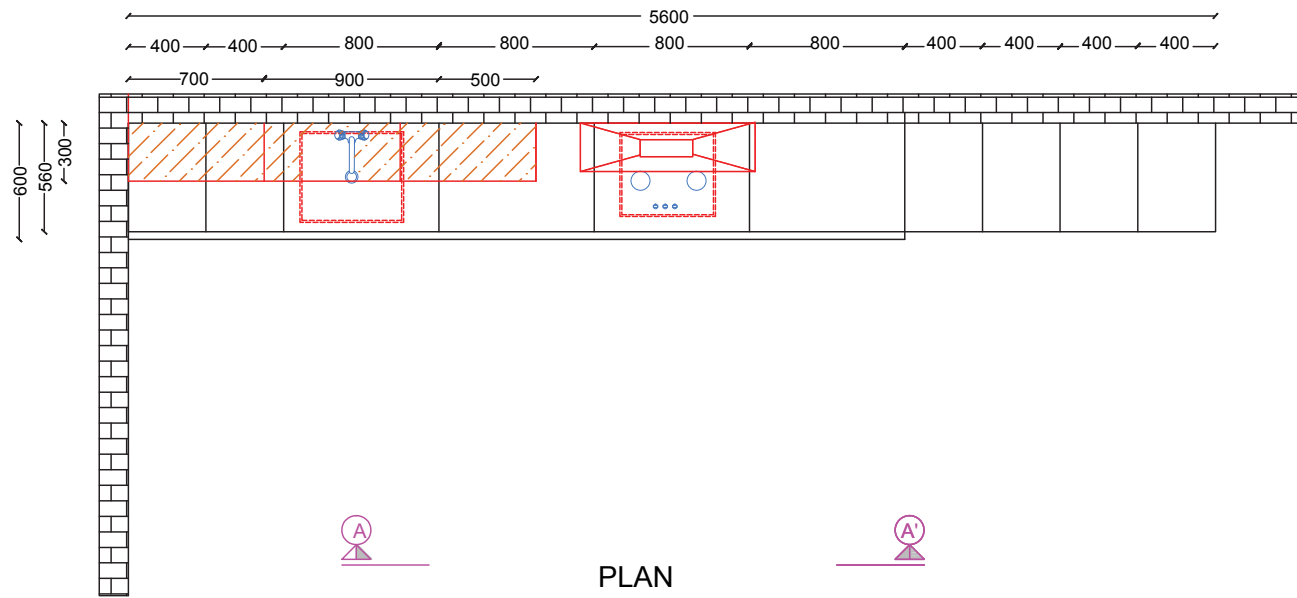
'THE PERFECT BLEND' - An elegant composition with effective use of contrasting colours. Kitchens created and designed to adapt to your lifestyle and cooking. The half hanged base cabinet with graphic design showcases your love for the best thing in life and emphasises the kitchen along with open box shelf. A perfect blend of innovation and convention, what better way to start the day!

GIORGIA

FLOOR PLAN



ELEVATION DETAILING A'



PLAN

KEY FOCUS AREA



SPECIFICATION

WASTE BINS FOR UNDER SINK CABINET DRAWERS ARE EASY TO USE AND HELP IN MAINTAINING HYGIENE IN THE KITCHEN. THESE WASTE BINS SLIDE OUT ALONG WITH THE DRAWER WHILE OPENING.

COLOURS AVAILABLE IN



TECHNICAL SPECIFICATION AND MATERIALS USED IN THIS KITCHEN

- | | | |
|------------------------|---|--|
| 1 FINISHING MATERIALS | : | CUSTOMISED GRAPHIC DESIGN |
| 2 STRUCTURAL MATERIALS | : | 16 MM BOILING WATER RESISTANT PLYWOOD |
| 3 HANDLE | : | CH 302 |
| 4 ACCESSORIES | : | UNDER SINK CABINET DRAWER, STAINLESS STEEL CUTLERY TRAY (BLUM) |
| 5 HARDWARE | : | SINGLE LIFT STAY |



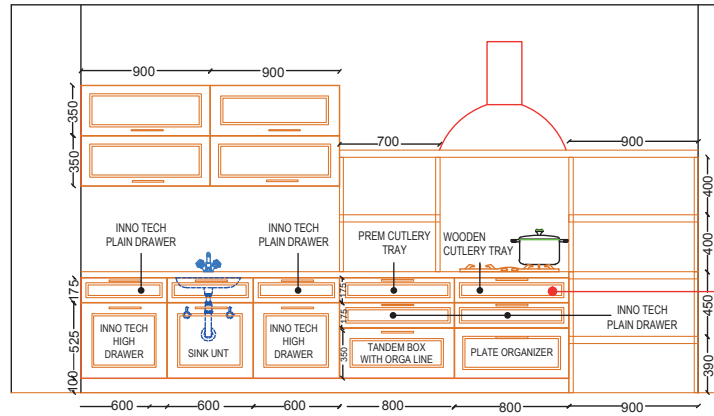


SERAFINA

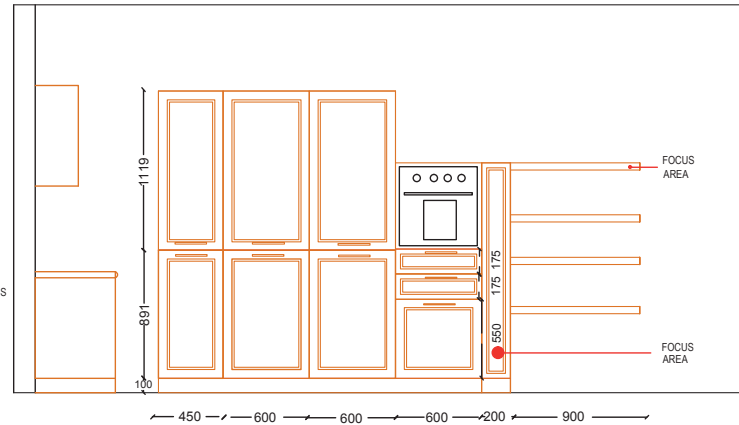
'DIVINE INTERVENTION' - With this collection, we invite you to achieve your personal interpretation of the classic kitchen. With open shelves in upper and lower forms, different colours and texture, Serafina is contemporary yet classic. The visible grains are a part of its natural appeal.

SERAFINA

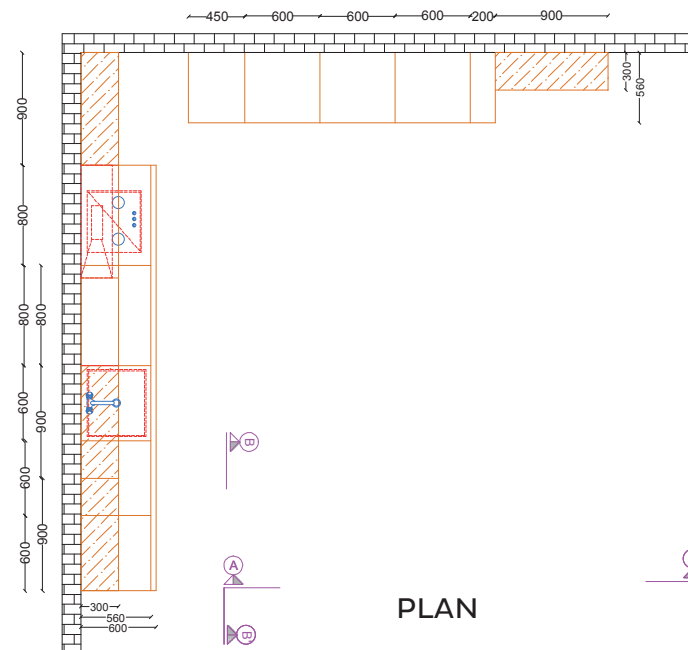
FLOOR PLAN



ELEVATION DETAILING B B'



ELEVATION DETAILING A A'



PLAN

KEY FOCUS AREA



SPECIFICATION

THE SOLUTION FOR NARROW CABINETS IS CAPATIBLE WITH TANDDEMBOX INTIVO.

COLOURS AVAILABLE IN



TECHNICAL SPECIFICATION AND MATERIALS USED IN THIS KITCHEN

- | | | |
|-------------------------|---|--|
| 1. FINISHING MATERIALS | : | RUBBER WOOD |
| 2. STRUCTURAL MATERIALS | : | 16 MM BOILING WATER RESISTANT PLYWOOD |
| 3. HANDLE | : | CH 903 |
| 4. ACCESSORIES | : | INNOTECH GRAIN TROLLY,WOODEN CUTLERY TRAY,
BOTTLE PULL OUT (BLUM) |
| 5. HARDWARE | : | 0 DEGREE SENSY HINGE |



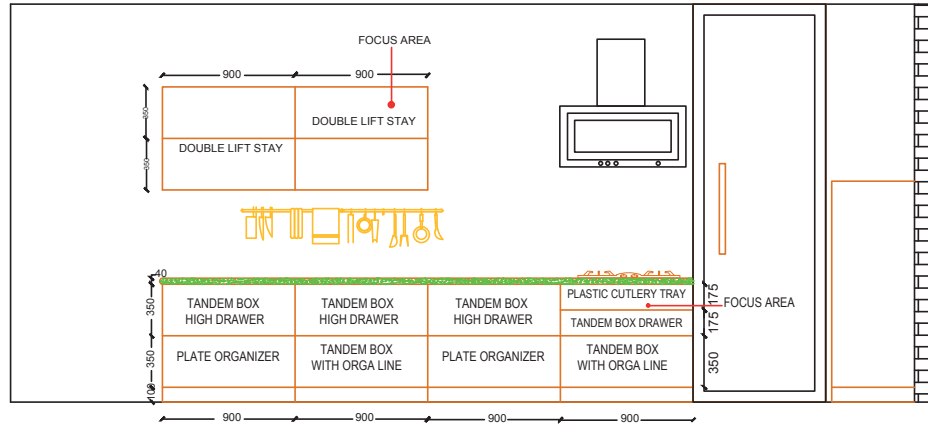


ELIGIANA

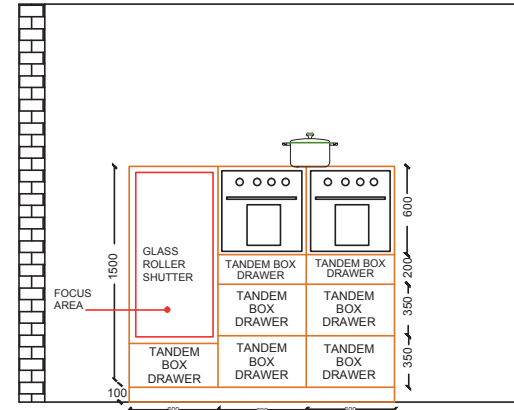
'CONSTANT ATTENTION' - With gleaming straight lines, this handleless kitchen has an ergonomic grip recess. The lacquered glass doors flow in perfect line, through an elegant surface. The result is perfect look & feel and convenience. Each and every aspect of this kitchen cabinet exemplifies great attention to detail and a commitment to providing you with a quality product.

ELIGIANA

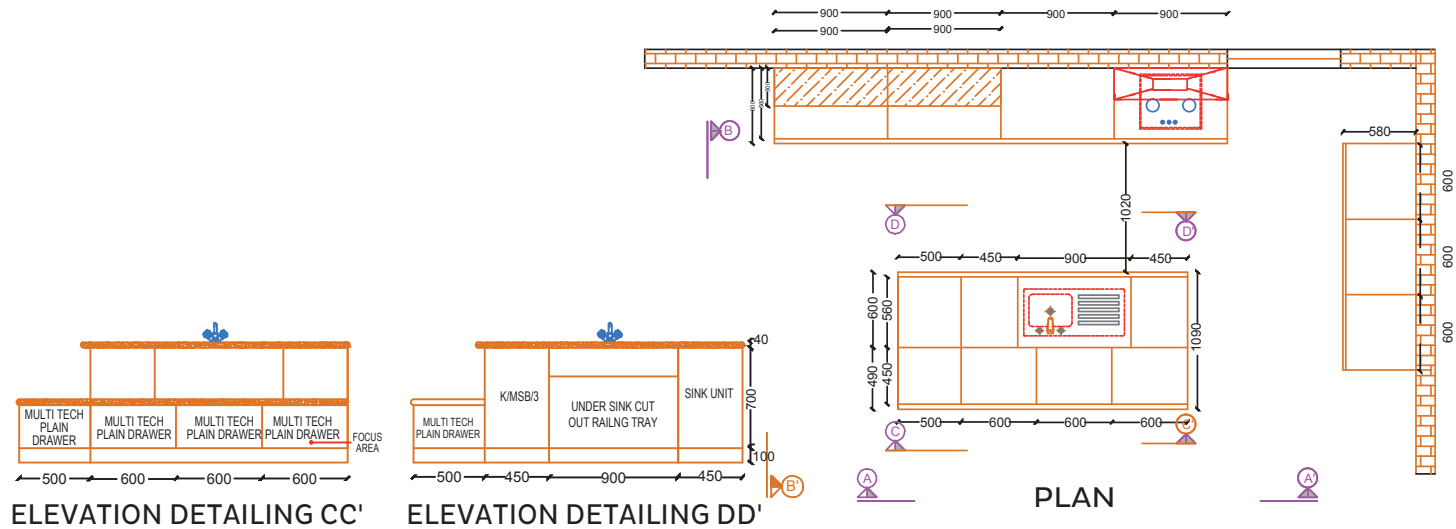
FLOOR PLAN



ELEVATION DETAILING A A'



ELEVATION DETAILING B B'



ELEVATION DETAILING C C'

ELEVATION DETAILING D D'

PLAN

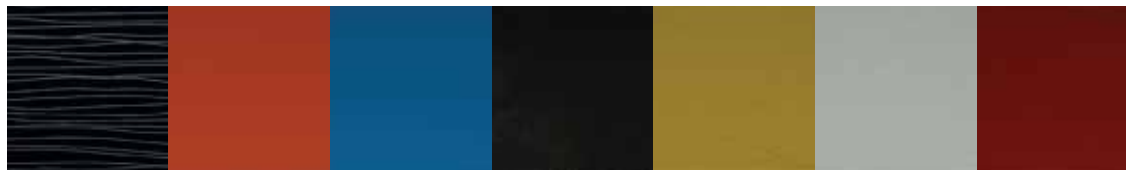
KEY FOCUS AREA



SPECIFICATION

ROLLER SHUTTER IS A SPACE SAVING UNIT. BY USING GLASS IT INCREASES THE LOOK ALSO.

COLOURS AVAILABLE IN



TECHNICAL SPECIFICATION AND MATERIALS USED IN THIS KITCHEN

- | | | |
|-------------------------|---|--|
| 1. FINISHING MATERIALS | : | LACQUERED GLASS |
| 2. STRUCTURAL MATERIALS | : | 16 MM BOILING WATER RESISTANT PLYWOOD |
| 3. HANDLE | : | PUSH TO OPEN |
| 4. ACCESSORIES | : | TANDEM CUSIO CUTLERY TRAY, GLASS SHUTTER,(BLUM) MULTITECH DRAWER(KUTCHINA) |
| 5. HARDWARE | : | O CRANK GLASS DOOR HINGE , DOUBLE LIFT STAY, (BLUM) |

ACCESSORIES



PULLOUT SERIES		
CORNER CAROUSAL / 270		
CABINET SIZE	CODE	SIZE
800 X 800	K/CA/270	DIA 700



PULLOUT SERIES		
MULTIPURPOSE PULLOUT		
CABINET SIZE	CODE	SIZE
450	K/MSB/3	360 X 440 X 530

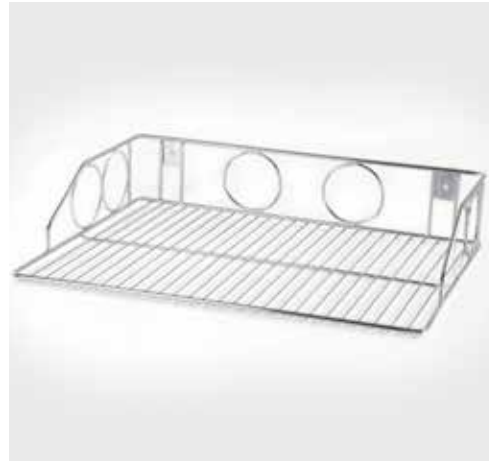


PULLOUT SERIES		
TWO LAYER SIDE SLIDING BOTTLE PULLOUT / 150		
CABINET SIZE	CODE	SIZE
200	K/BT/150	100 X 420 X 485

(All dimensions given are in mm)



HANGING SERIES		
TWO LAYER MICRO OVEN STAND		
CABINET SIZE	CODE	SIZE
450	K/HG/MW/1	545X410X280



HANGING SERIES		
ONE LAYER MICRO OVEN STAND		
CABINET SIZE	CODE	SIZE
600	K/HG/MW2	545 X 410 X 110



HANGING SERIES		
PIPE		
CABINET SIZE	CODE	SIZE
450	K/PIPE/16	



HANGING SERIES		
HOOKS		
CABINET SIZE	CODE	SIZE
	K/HOOK/1	



HANGING SERIES		
HOOKS		
CABINET SIZE	CODE	SIZE
	K/HOOK/2	



HANGING SERIES		
SPOON HOLDER		
CABINET SIZE	CODE	SIZE
450	K/HG/SP1	150X100X170



WIRE SERIES

CUP & SAUCER/ 1

CABINET SIZE	CODE	SIZE
450	K/CS/1	370 X 485 X 100



WIRE SERIES

THALI BASKET/ 2

CABINET SIZE	CODE	SIZE
600	K/TH/2	520 X 485 X 150



WIRE SERIES

PLAIN BASKET/ 1

CABINET SIZE	CODE	SIZE
450	K/BS/1	370 X 485 X 100



WASTE BIN SERIES

AUTO CLOSING SS WASTE BIN

CABINET SIZE	CODE	SIZE
	K/WB/A2	



WASTE BIN SERIES

TWO LAYER SIDE SLIDING DETERGENT RACK / 150

CABINET SIZE	CODE	SIZE
300	K/DT/150	200X485X430



SINK SERIES

SINGLE SINK WITH DRAIN BOARD

CABINET SIZE	CODE	SIZE
700X1000X56	K/SN/32188	490X190X895



SINK SERIES		
SINGLE TUB TYPE SINK		
CABINET SIZE	CODE	SIZE
700X900X560	K/SN/322010/P	455X205X755



SINK SERIES		
SINGLE SINK WITH DRAIN & WASTE		
CABINET SIZE	CODE	SIZE
700X1000X560	K/SN/36208	455X205X895



SINK SERIES		
DOUBLE SINK WITH DRAIN BOARD		
CABINET SIZE	CODE	SIZE
700X1200X560	K/SN/40208	500X205X1060



DRAWERS		
SIDE PULLOUT DSA WITH ARTLINE		
CABINET SIZE	CODE	SIZE
300 MM	DSA. AL. 300	500X645 MM



DRAWERS		
BLUM TANDEM BOX WITH ORGALINE PLUS DRAWER		
CABINET SIZE	CODE	SIZE
500 MM	TBX. DP. 109	900 MM



DRAWERS		
TANDEMBOX INTIVO NARROW CABINET		
CABINET SIZE	CODE	SIZE
165-200 MM	INT. NC. SWT	500 MM



DRAWERS		
TANDEMBOX M HEIGHT STANDARD DRAWER		
CABINET SIZE	CODE	SIZE
300-1200 MM	265. 59. 56E	



DRAWERS		
INTIVO D HEIGHT STANDARD DRAWER		
CABINET SIZE	CODE	SIZE
300-1200 MM	SW1. 65. 550	



CORNER UNITS		
WARICORNER RIGHT (ARTLINE)		
CABINET SIZE	CODE	SIZE
DOOR WIDTHS 450MM	WCO AL RHS	



CORNER UNITS		
SPACE CORNER WITH SYNCHROMOTION		
CABINET SIZE	CODE	SIZE
	TBX.CU.101 FOR M HEIGHT TBX.CU.102 FOR D HEIGHT	1050X1050MM



TALL UNITS		
PANTRY PULL OUT DUSA		
CABINET SIZE	CODE	SIZE
600 MM	547. 29. 985	1900-2150



TALL UNITS		
BLUM TANDEMBOX LADDER UNIT		
CABINET SIZE	CODE	SIZE
450-1200 MM	TBX. TU. 101 WHITE	



TALL UNITS		
SWING OUT CHEF'S PANTRY UNIT		
CABINET SIZE	CODE	SIZE
900 MM	546. 97. 203	HEIGHT 1900-2200 MM



TALL UNITS		
PANTRY PULL-OUT HSA ROTARY (ARTLINE)		
CABINET SIZE	CODE	SIZE
400 MM	HSA. AL. RTY	1990-2230MM



CUTLERY SERIES		
PLATE ORGANIZER-FINLINE-WOOD AMERICAN WALNUT		
CABINET SIZE	CODE	SIZE
900 MM	555. 88. 708 555. 88. 730	804X470



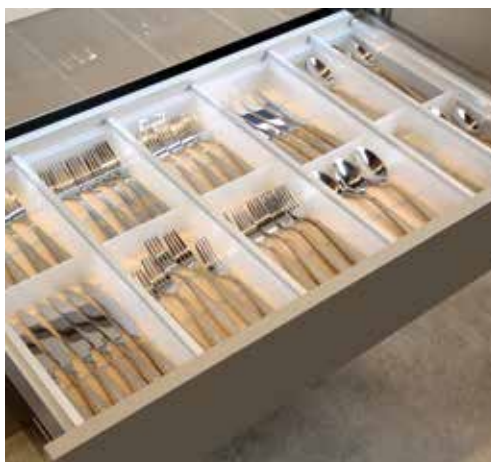
CUTLERY SERIES		
BLUM ORGALINE CUTLERY TRAY STAINLESS STEEL		
CABINET SIZE	CODE	SIZE
900 MM	CUT. 00. 101	



CUTLERY SERIES		
WOODEN CUTLERY TRAY 900 MM		
CABINET SIZE	CODE	SIZE
900 MM	555. 87. 708	801.5 X472X49



CUTLERY SERIES		
SCOOP LL'S CUTLERY TRAY		
CABINET SIZE	CODE	SIZE
600 MM	556. 89. 604	DEPTH 450



CUTLERY SERIES		
WHITE CUSIO TRAY FOR CABINET WIDTH 900		
CABINET SIZE	CODE	SIZE
900 MM	556. 90. 816	



CUTLERY SERIES		
PLATE HOLDER ALUMINIUM HANDLES		
CABINET SIZE	CODE	SIZE
900MM	555. 87. 950	

HARDWARE



HARDWARE SERIES		
0 DEGREE INTERMAT HINGE		
CABINET SIZE	CODE	SIZE
	KUTCHINA	



HARDWARE SERIES		
L-CORNER		
CABINET SIZE	CODE	SIZE
	KUTCHINA	



HARDWARE SERIES		
MULTITECH SET (86/500)		
CABINET SIZE	CODE	SIZE
	KUTCHINA	

(All dimensions given are in mm)



HARDWARE SERIES		
MULTITECH RAILING SET - 500 MM		
CABINET SIZE	CODE	SIZE
	KUTCHINA	



HARDWARE SERIES		
BLIND CORNER		
CABINET SIZE	CODE	SIZE
	KUTCHINA	



HARDWARE SERIES		
SLIDING CHANNEL		
CABINET SIZE	CODE	SIZE
	KUTCHINA	500MM



HARDWARE SERIES		
INNOTECH DRAWER SET (500MM) SILVER		
CABINET SIZE	CODE	SIZE
	KUTCHINA	



HARDWARE SERIES		
PLINTH 100MM SILVER (MINI 8 FT)		
CABINET SIZE	CODE	SIZE
	REHAU	500MM



HARDWARE SERIES		
PLINTH CORNER CONNECTOR SILVER		
CABINET SIZE	CODE	SIZE
	REHAU	



HARDWARE SERIES		
PLINTH BRACKET		
CABINET SIZE	CODE	SIZE
	REHAU	



HARDWARE SERIES		
LEGS		
CABINET SIZE	CODE	SIZE
	REHAU	



HARDWARE SERIES		
G-HANDLE / PROFILE HANDLE		
CABINET SIZE	CODE	SIZE
	EBCO	



HARDWARE SERIES		
STAY - PROLIFT (HYDRAULLIC) - PLC 08		
CABINET SIZE	CODE	SIZE
	EBCO	



HARDWARE SERIES		
L CLIP		
CABINET SIZE	CODE	SIZE



HARDWARE SERIES		
D-BRACKET - 8 MM		
CABINET SIZE	CODE	SIZE



HARDWARE SERIES		
SHELF SUPPORT		
CABINET SIZE	CODE	SIZE
	KUTCHINA	20" 500MM



HARDWARE SERIES		
GLASS CORNER (PKT OF 4)		
CABINET SIZE	CODE	SIZE
	EBCO	



HARDWARE SERIES		
PLINTH END CAP		
CABINET SIZE	CODE	SIZE
	REHAU	



LIFT SYSTEMS		
AVENTOS HF LIFT SYSTEMS		
CABINET SIZE	CODE	SIZE
600-900 MM	AHF. NSWDW02	560X580MM



HINGES		
BLUM CLIP TOP BLUMOTION		
CABINET SIZE	CODE	SIZE
450	CLT. CS. 110	



HINGES		
BLUM CLIP TOP GLASS DOOR HINGE		
CABINET SIZE	CODE	SIZE
450	CLT. CS. 125CR	



HINGES		
BLUM WIDE ANGLE HINGE BLUMOTION		
CABINET SIZE	CODE	SIZE
	CLT. CS. 170 AND B71. 96. 933	

HANDLES



HANDLES SERIES		
HANDLE - 6" ECONOMY		
CABINET SIZE	CODE	SIZE
	KUTCHINA	



HANDLES SERIES		
DESIGNER HANDLE - 6"		
CABINET SIZE	CODE	SIZE
	KUTCHINA	



HANDLES SERIES		
PREMIUM HANDLE - 8"		
CABINET SIZE	CODE	SIZE
	KUTCHINA	

WOOD WORK



LAMINATE-K/CP/040



LAMINATE-K/CP/041



LAMINATE-K/CD/063



LAMINATE-K/CD/067



LAMINATE-K/CP/068



LAMINATE-K/CP/069



LAMINATE-K/CP/070



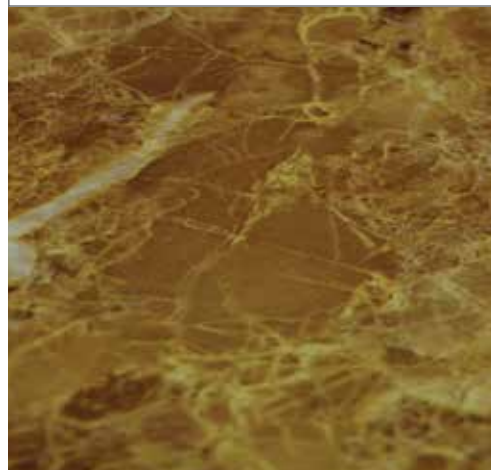
LAMINATE-K/CP/071



LAMINATE-K/CD/072



LAMINATE-K/RC/073



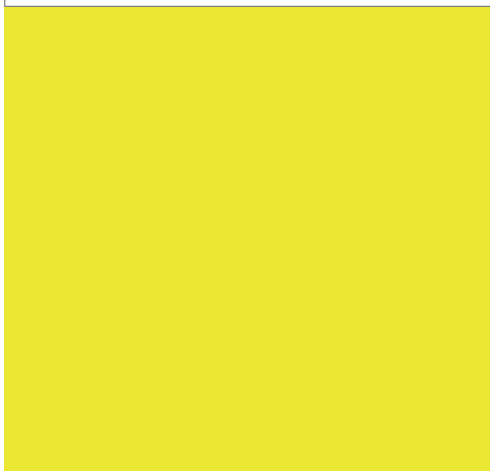
LAMINATE-K/RC/074



LAMINATE-K/RC/075



LAMINATE-K/RT/077



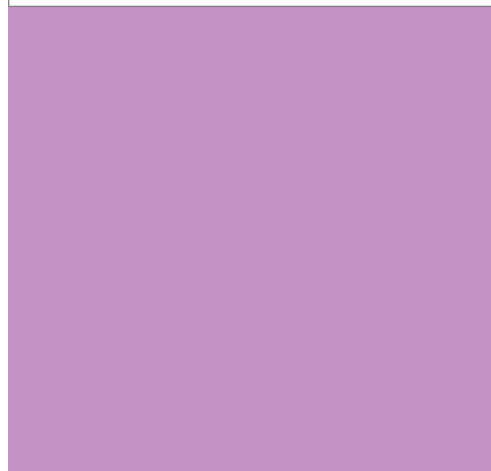
PU PAINT-YELLOW



RUBBER WOOD



PU PAINT-ORANGE



PU PAINT-VIOLET



RUBBER WOOD



PU PAINT-GREY



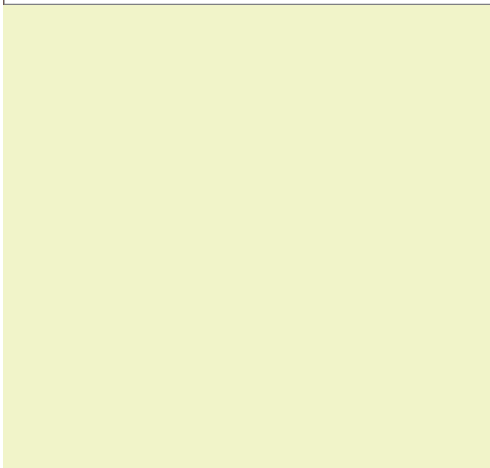
RUBBER WOOD



RUBBER WOOD



RUBBER WOOD



UV HIGH GLOSS



UV HIGH GLOSS



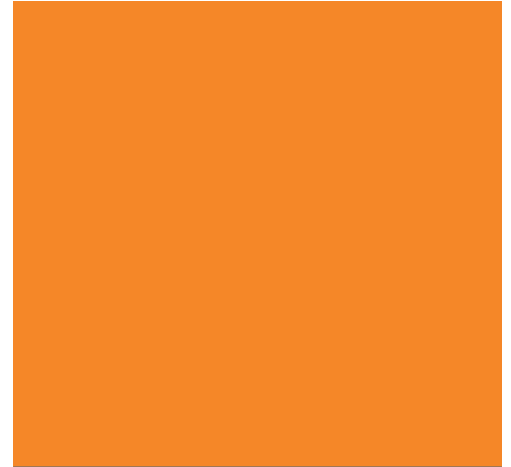
RUBBER WOOD



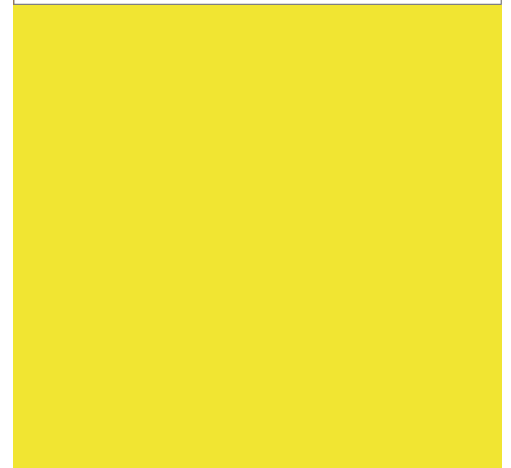
UV HIGH GLOSS



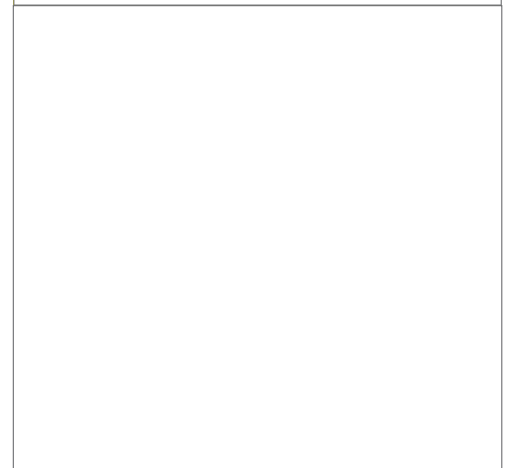
UV HIGH GLOSS



UV HIGH GLOSS



UV HIGH GLOSS



UV HIGH GLOSS



MORO 5112B



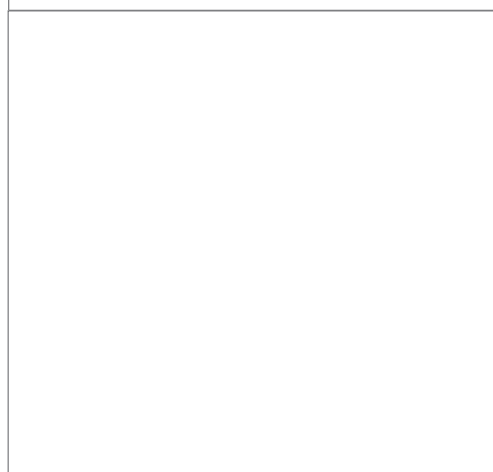
VINO 5641B



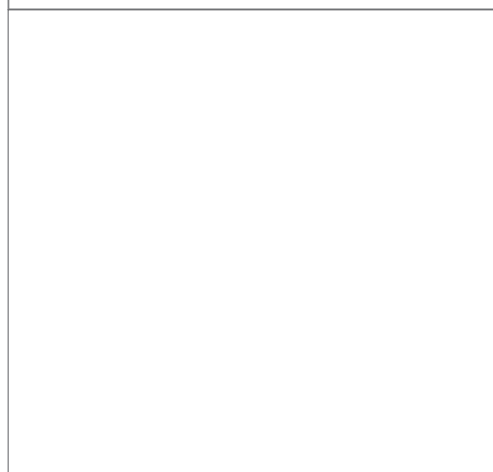
LACQUERED GLASS -YELLOW



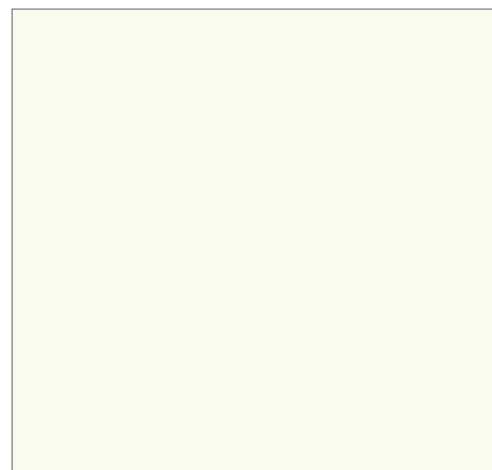
PRUGNA 5642B



MERIGA 5026B



LACQUERED GLASS - WHITE



MAGNOLIA 5335B



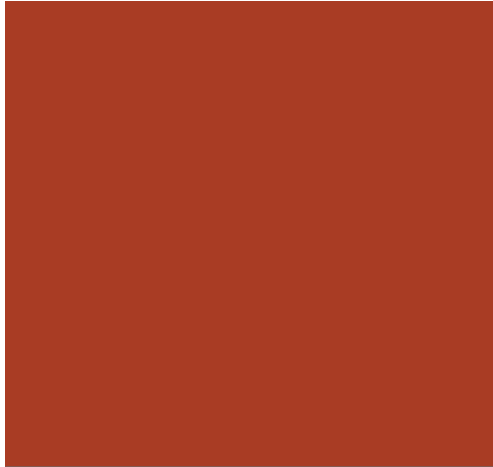
BIGIO 6340B



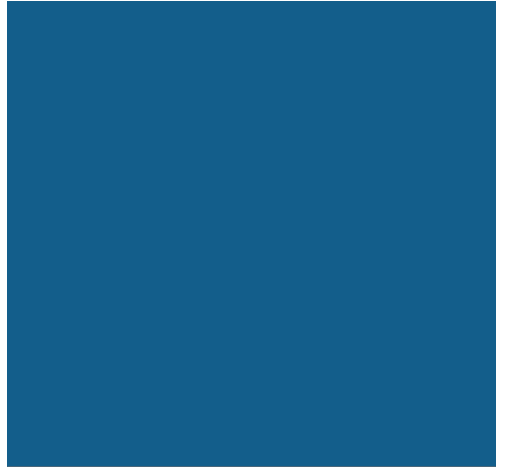
LACQUERED GLASS - FLAME RED



LACQUERED GLASS - BLACK



LACQUERED GLASS-ORANGE



LACQUERED GLASS-AQUA BLUE



Bajoria Tower
20, Chinar Park (Near New Town City Center 2)
Kolkata - 700157
www.kutchina.com